



2006

## A Socio-economic Profile of the Nahr El-Bared and Beddawi Refugee Camps of Lebanon

Based on the 2006 Labour Force Survey among Palestinian  
Refugees in Lebanon

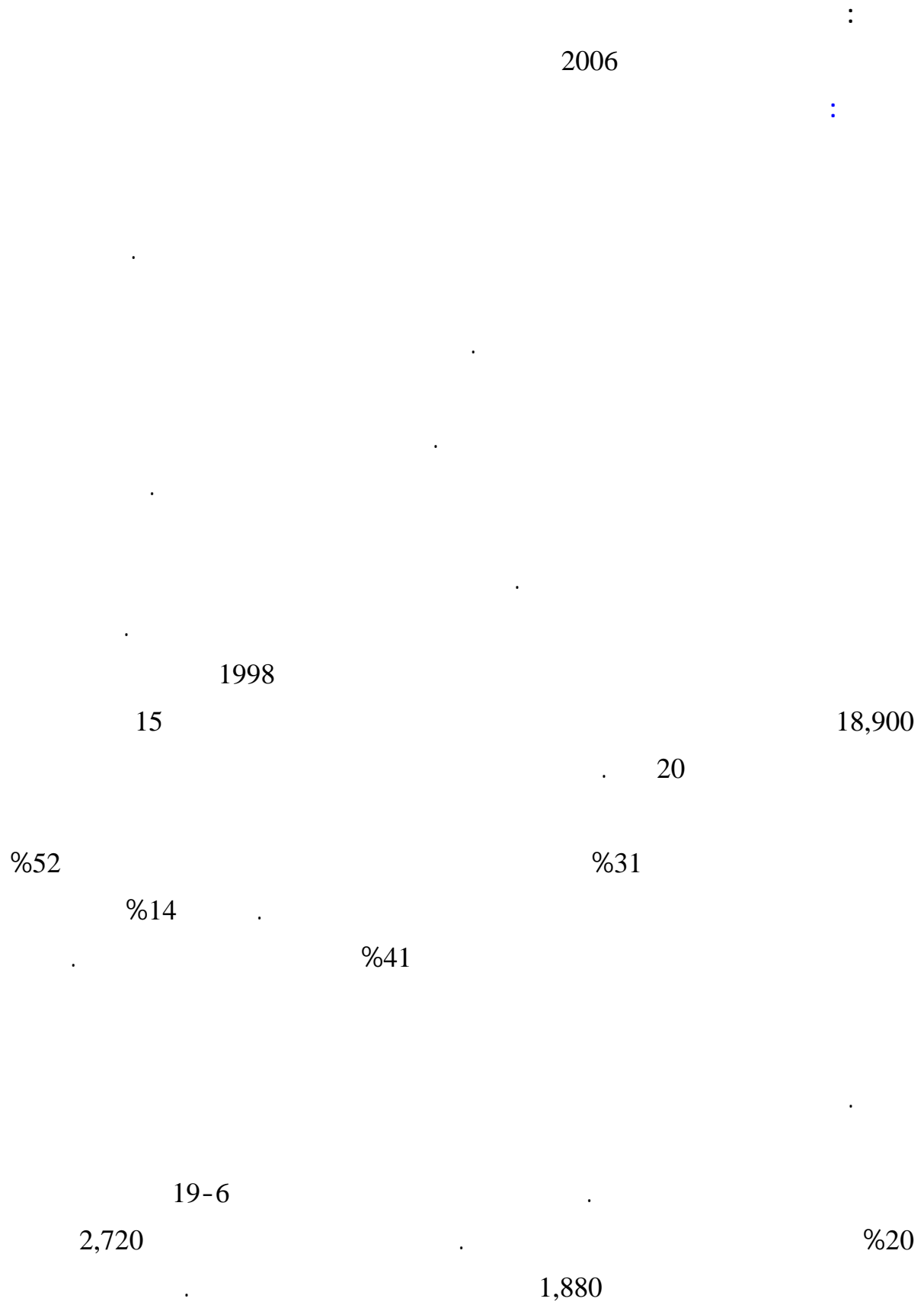
Age A. Tiltnes :

مركز الزيتونة للدراسات والاستشارات  
بيروت - لبنان

تموز/ يوليو 2007









6.3

%6

%7

4,200

.%28

:

)

(

"

"

Fafo " "

" "

2006

Palestinian Central Bureau of Statistics and

Natural Resources (PCBS)

2,744

1

2

"

"

3

282

526

:

400,000

250,000

4

31,000

16,000

40,000

" "

40,000-30,000

" "

" "

.1998

%6

%7

2000

1999 " "

5.3

2006

5.5

5 5.18 2006

5 4.73

7 1999 " "

1999

8 5.34 5.77

2006 1999

9,300 18,900 2006

%48 %52 (1)

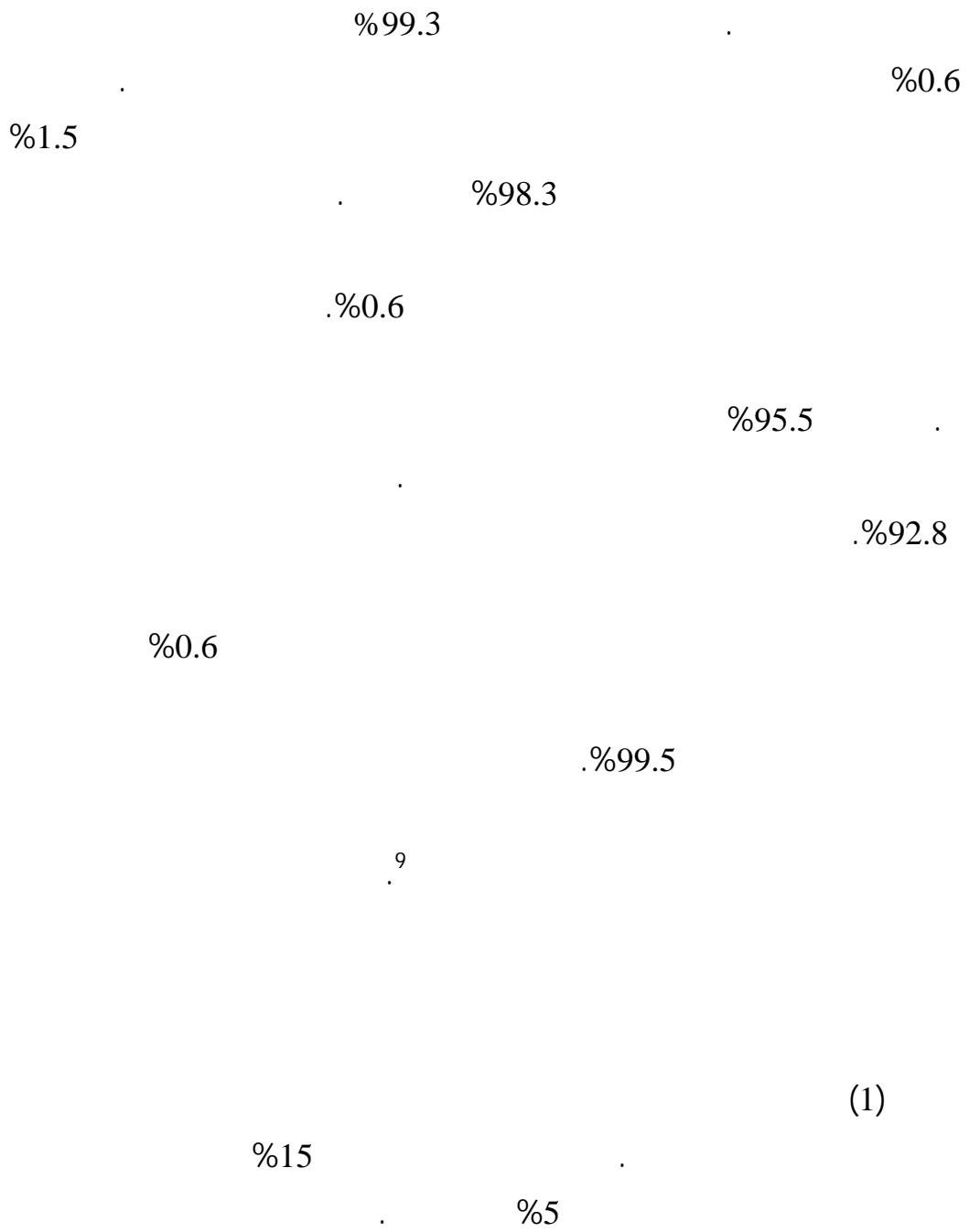
15 %33

20 %47

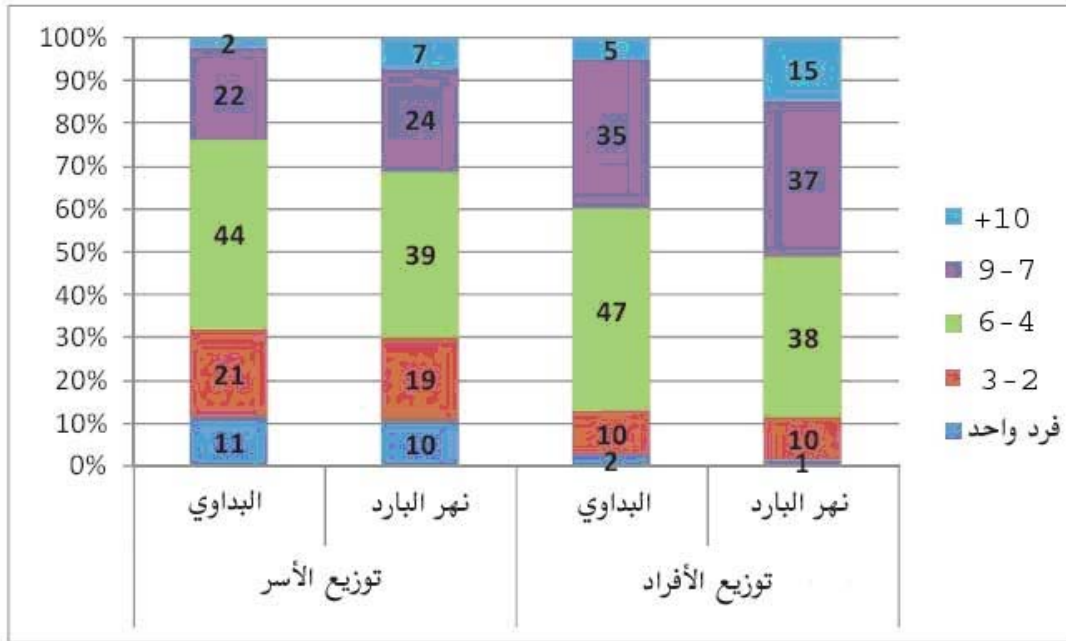
:(1)

( )							
<b>4,037</b>	<b>28,191</b>	-	<b>100</b>	<b>100</b>	<b>52</b>	<b>48</b>	
346	2,418	9	9	100	51	49	4-0
446	3,106	20	11	100	51	49	9-5
535	3,720	33	13	100	52	48	14-10
949	6,628	56	24	100	48	52	24-15
811	5,676	76	20	100	55	45	39-25
736	5,144	95	18	100	55	45	64 -40
214	1,499	100	5	100	63	37	65





(1)



(2)

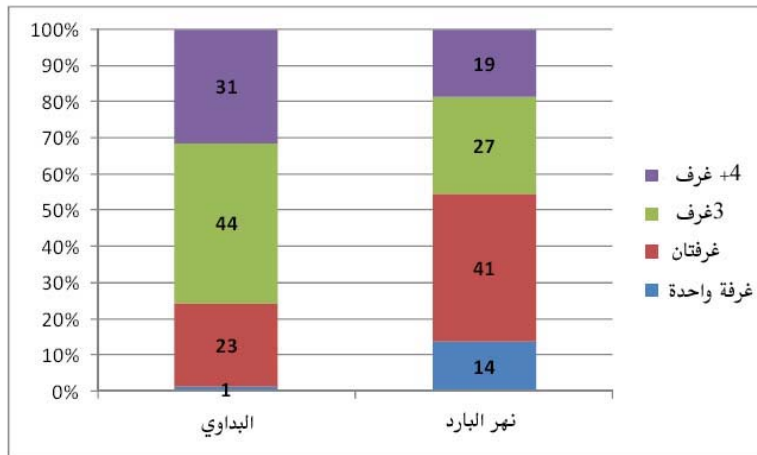
%19

%31

%14

( )

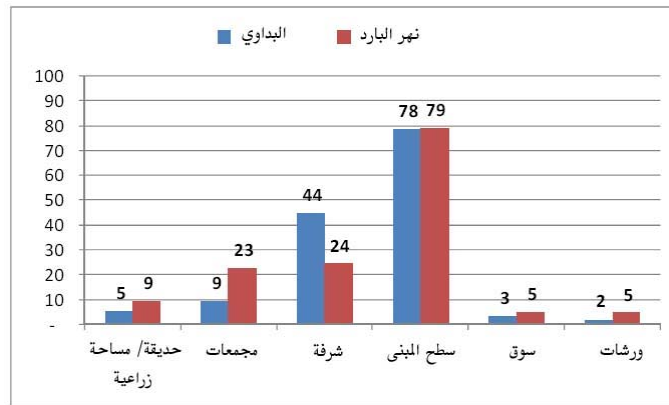
(2)



(3).

(10% 5%).

(3):



10

2%

92%

99%

98%

( )

36%

43%

43%

52%

."

."

%74

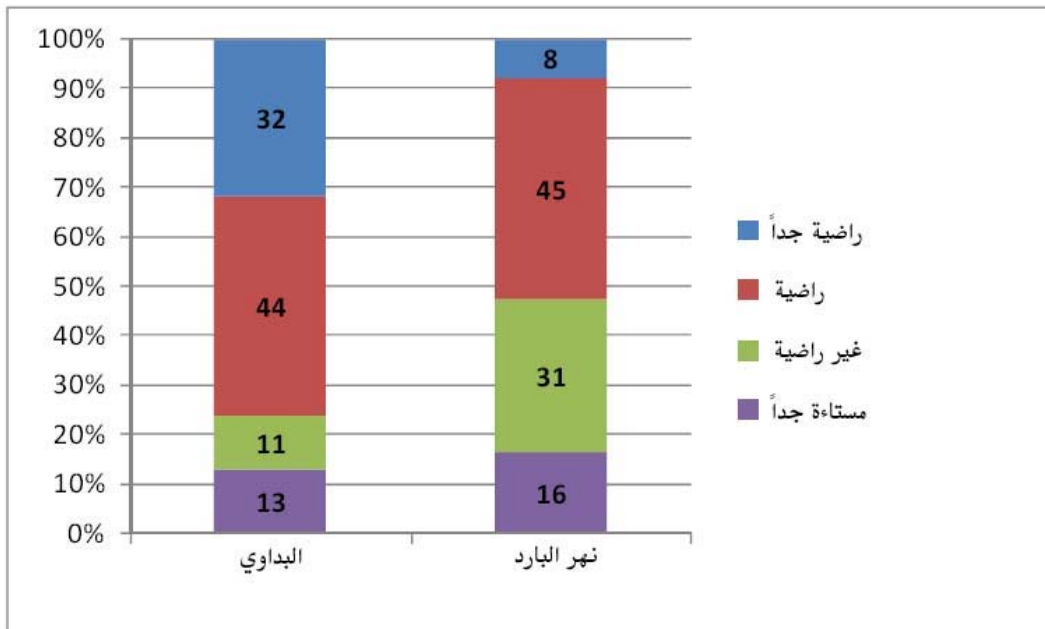
%63

" "

(4)

" " " " " (%76)  
(%53)

(4):

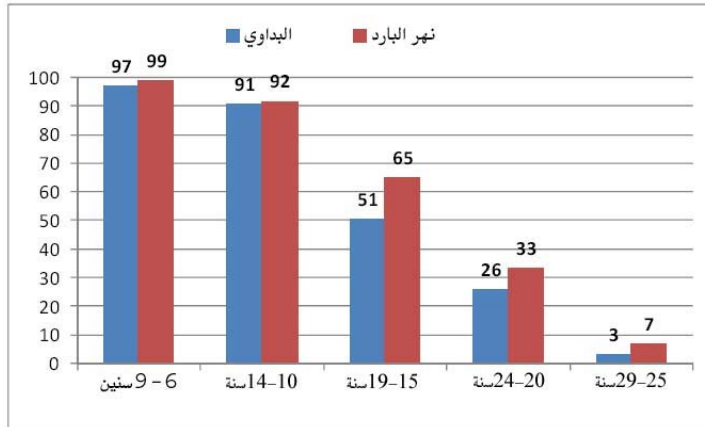


:

(5)

29-6

(5):



(6)

19-6

13%

7%

( ) 1% )

2,720

1,880

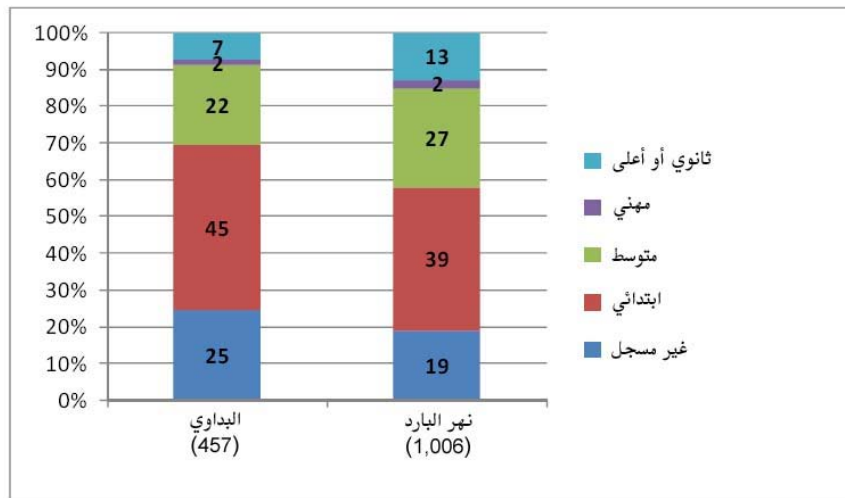
690 1,430

19-6

(6):

6,990 :

3,197 :



(2)

%43

24-6

%27

%7

24-6

" " %16

24-6

:(2)

( )									
<b>1,837</b>	<b>12,809</b>	<b>100</b>	<b>14</b>	<b>2</b>	<b>20</b>	<b>32</b>	<b>31</b>		
925	6,450	100	13	3	19	31	34		
912	6,359	100	15	1	21	34	28		
<b>572</b>	<b>4,002</b>	<b>100</b>	<b>10</b>	<b>1</b>	<b>17</b>	<b>36</b>	<b>35</b>		
288	2,015	100	7	2	16	32	43		
284	1,987	100	14	1	18	40	27		
<b>1,265</b>	<b>8,807</b>	<b>100</b>	<b>16</b>	<b>2</b>	<b>21</b>	<b>31</b>	<b>30</b>		
637	4,435	100	15	4	20	30	31		
628	4,372	100	16	1	23	31	29		

25

(3)

%10

%27

%16

25

25

:(3)

( )											
<b>1,531</b>	<b>10,709</b>	<b>100</b>	<b>8</b>	<b>4</b>	<b>7</b>	<b>2</b>	<b>15</b>	<b>39</b>	<b>24</b>		
728	5,092	100	11	7	6	4	13	38	22		
803	5,617	100	6	2	8	1	17	41	25		
<b>530</b>	<b>3,710</b>	<b>100</b>	<b>8</b>	<b>3</b>	<b>5</b>	<b>2</b>	<b>15</b>	<b>42</b>	<b>25</b>		
249	1,743	100	9	4	4	2	12	43	25		
281	1,967	100	8	2	5	1	17	41	25		
<b>1,001</b>	<b>6,999</b>	<b>100</b>	<b>8</b>	<b>5</b>	<b>8</b>	<b>3</b>	<b>15</b>	<b>38</b>	<b>23</b>		
479	3,349	100	12	8	7	4	13	35	21		
522	3,650	100	5	2	9	2	17	41	25		

.(4)

11

15

:(4)

( )						
<b>2,710</b>	<b>18,947</b>	<b>100</b>	<b>13</b>	<b>12</b>	<b>75</b>	
1,247	8,906	100	9	12	79	
1,436	10,041	100	16	12	72	
<b>883</b>	<b>6,182</b>	<b>100</b>	<b>14</b>	<b>14</b>	<b>72</b>	
418	2,926	100	11	13	75	
465	3,256	100	16	14	70	
<b>1,827</b>	<b>12,765</b>	<b>100</b>	<b>13</b>	<b>11</b>	<b>76</b>	
856	5,981	100	9	11	80	
971	6,785	100	16	11	73	

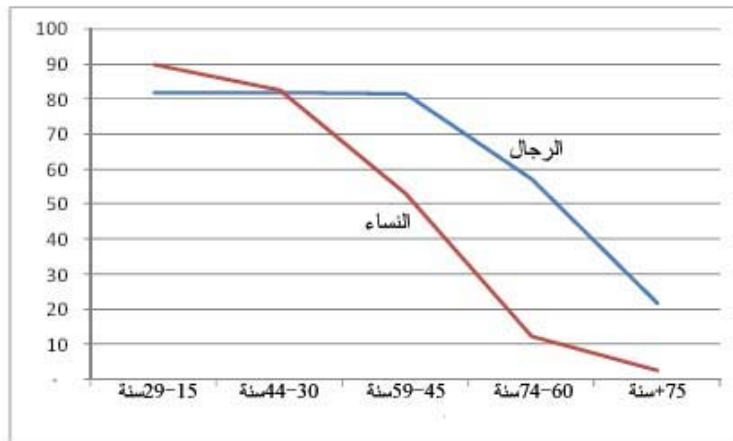
.(8) (7)

%90

(8) .%82

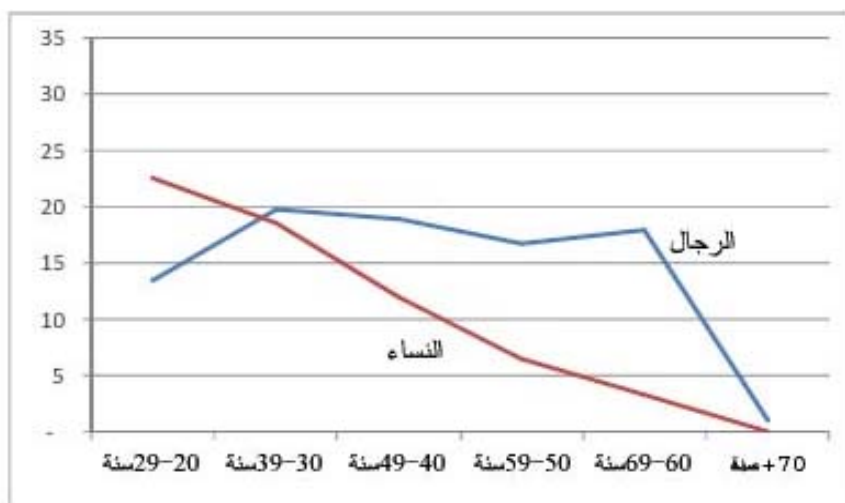
:(7)

(2,710)





(8):



"

%68

13

12

15

"

(5).

%33

%44

%37

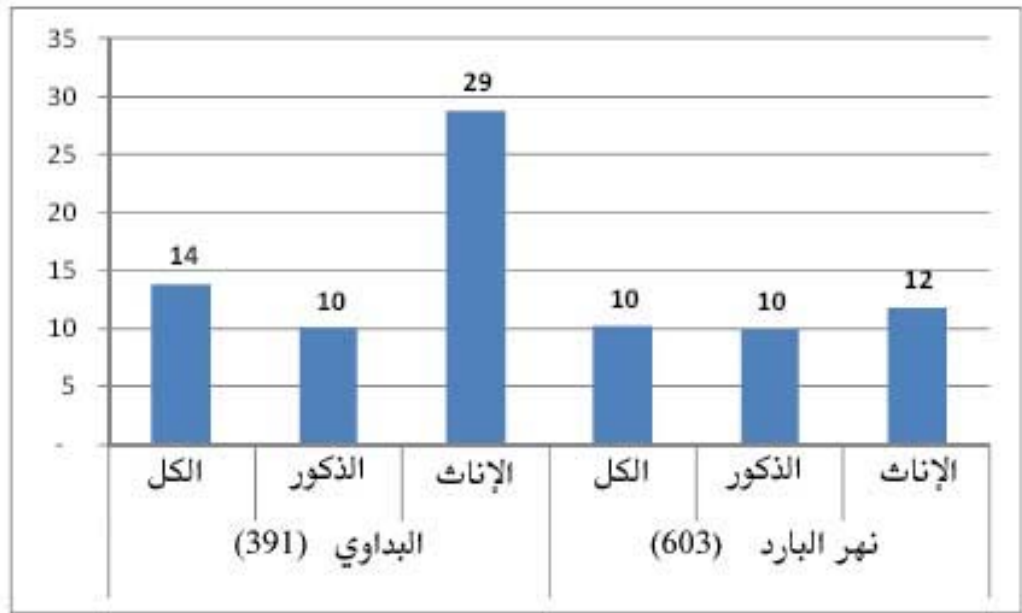
(5):

( )						
<b>883</b>	<b>6,182</b>	<b>100</b>	<b>56</b>	<b>44</b>		
418	2,926	100	26	74		
465	3,256	100	83	17		
<b>1,827</b>	<b>12,765</b>	<b>100</b>	<b>67</b>	<b>33</b>		
856	5,981	100	40	60		
971	6,785	100	90	10		

(9).

14% 10%

( ) (9):



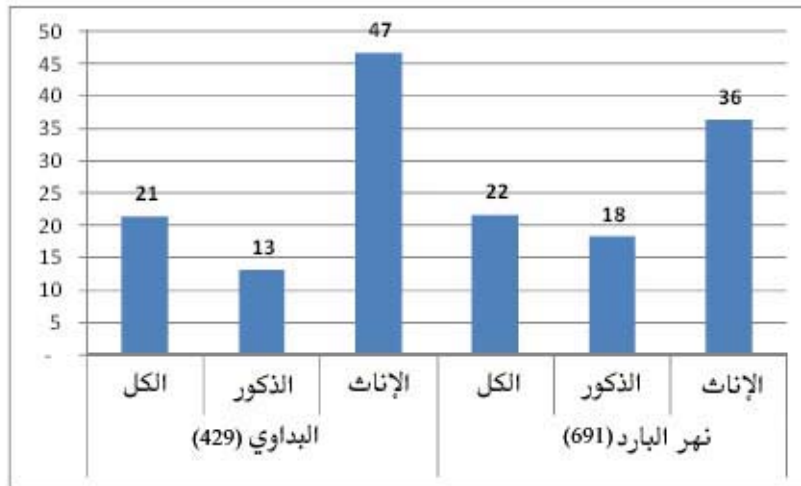
(10).

29-15

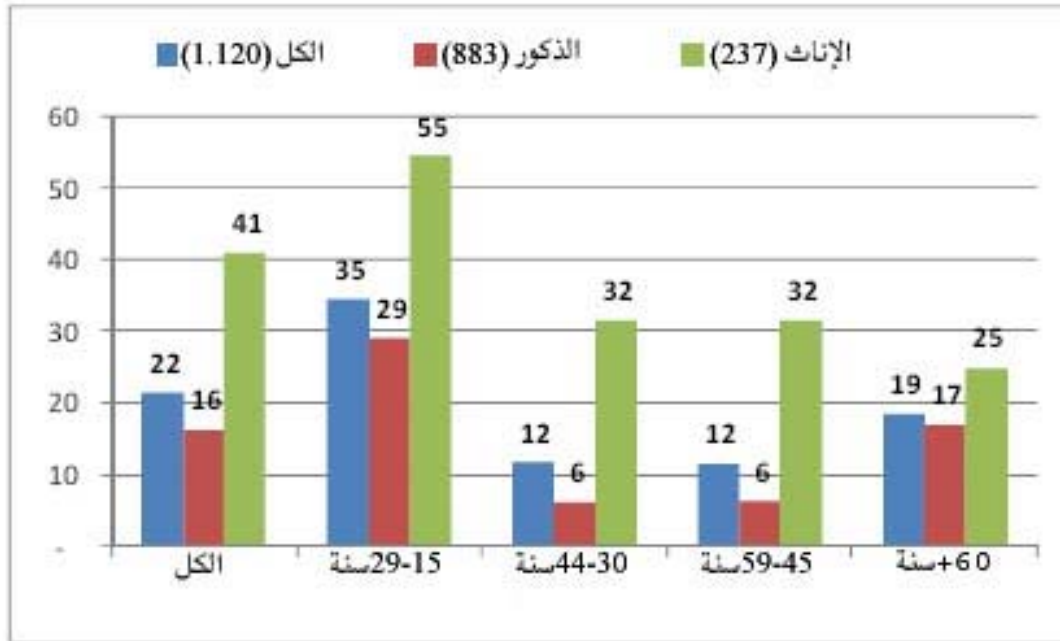
14



:(11)



:(12)



%4

%12

%9

%16

%3

.(6)

%18

15

:(6)

( )											
2,710	18,947	100	5	3	8	2	17	38	18	9	15
879	6,149	100	9	6	7	4	11	40	20	3	
115	807	100	18	5	3	6	10	30	25	2	
994	6,956	100	10	6	6	5	11	39	20	3	
1,716	11,991	100	2	2	9	1	20	37	17	12	

%1

%2

16

" "

%32

(7)

%31

%.30

%.34

%.19

%10

:(7)

( )											
<b>873</b>	<b>6,107</b>	<b>100</b>	<b>11</b>	<b>12</b>	<b>1</b>	<b>4</b>	<b>31</b>	<b>27</b>	<b>11</b>	<b>3</b>	
733	5,126	100	9	8	1	5	31	32	11	2	
140	981	100	19	34	1	-	30	1	8	6	

%39

.(8)

%49

%15

%11

.(

383

770)

.(

520

971)

:(8)

( )										
<b>874</b>	<b>6,144</b>	<b>100</b>	<b>8</b>	<b>4</b>	<b>43</b>	<b>1</b>	<b>24</b>	<b>1</b>	<b>18</b>	
734	5,133	100	7	4	49	1	23	1	15	
140	981	100	12	-	11	2	34	2	39	

.%23 %33

%34

(%21)

.%26

( %20 %15)

(%27)

.(%38 %51)

.(9)

:(9)

( )												
<b>879</b>	<b>6,149</b>	<b>100</b>	<b>6</b>	<b>0</b>	<b>7</b>	<b>69</b>	<b>1</b>	<b>3</b>	<b>6</b>	<b>1</b>	<b>9</b>	
337	2,359	100	-	1	7	65	1	3	15	1	8	
542	3,790	100	9	0	7	71	1	3	0	1	9	

.(10)

( )  
.( )

:(10)

( )					( )	( )				
<b>879</b>	<b>6,149</b>	<b>100</b>	<b>1</b>	<b>2</b>	<b>24</b>	<b>10</b>	<b>4</b>	<b>60</b>		
337	2,359	100	0	1	31	4	2	63		
542	3,790	100	1	3	19	14	5	58		

%5

.(13)

%80

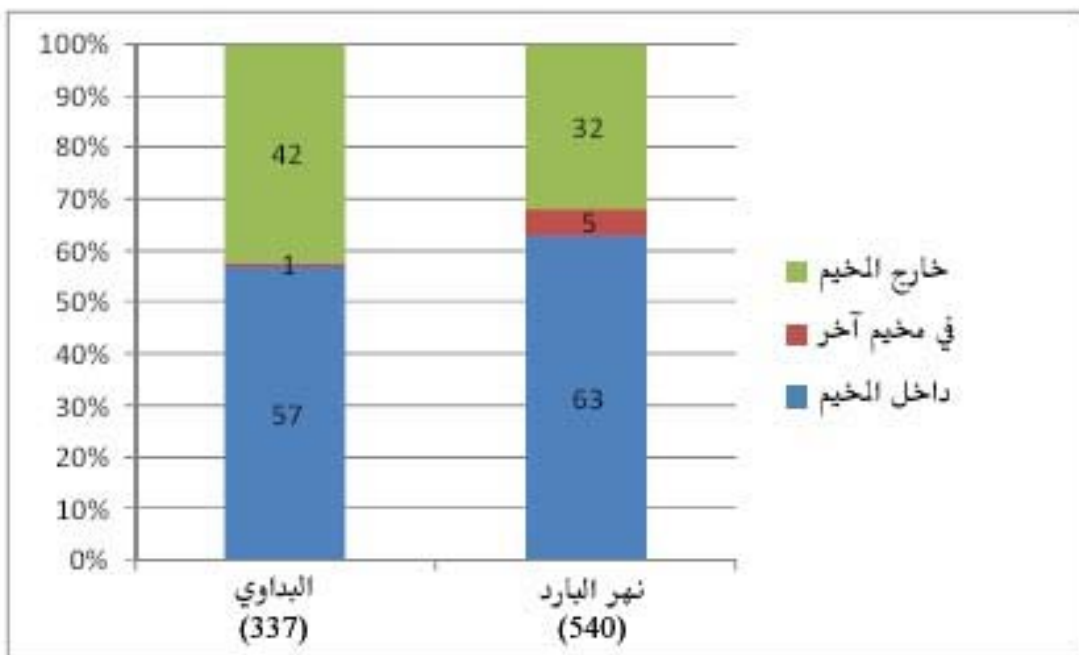
(13)

%63



2,100 %55  
17

.( ) :13



(11)  
. ( ) 56  
50 52

42 40

.( " " )

35

.(11)

35

50

(%10 %17)

:(11)

( )			56	56-49	48-35	35	
<b>879</b>	<b>6,149</b>	<b>100</b>	<b>36</b>	<b>13</b>	<b>31</b>	<b>20</b>	
337	2,359	100	23	13	40	24	
542	3,790	100	45	13	25	18	
739	5,168	100	39	14	32	15	
140	981	100	22	8	25	45	

:

" "

)

34

(

3,000

18

(12)

3,000

.(12)

1,000

.(14)

.2006

:(12)

( )			10,000	-3,000 10,000	-2,000 3,000	-1,000 2,000	1,000	
<b>755</b>	<b>5,280</b>	<b>100</b>	<b>4</b>	<b>20</b>	<b>21</b>	<b>37</b>	<b>19</b>	
258	1,806	100	5	21	27	31	15	
497	3,475	100	3	19	17	39	21	
646	4,517	100	4	19	22	37	18	
109	764	100	5	24	13	31	28	

90,000 114,000

85,000 95,000

.(13)

1,000

:(13)

( )			75		25	
<b>810</b>	<b>5,666</b>	<b>90</b>	<b>125</b>	<b>107</b>	<b>60</b>	
310	2,170	85	125	95	50	
500	3,496	90	145	114	60	

(14)

( )

(14)

(12)

1,000

:(14)

( )				
<b>755</b>	<b>5,280</b>	<b>1.8</b>	<b>3</b>	
258	1,806	2.1	3.6	
497	3,475	1.7	2.7	
646	4,517	1.9	2.9	
109	764	1.7	3.5	

170	1,187	1.3	2.2	
306	2,144	1.7	2	
84	588	1.9	2.1	
195	1,361	2.9	5.7	
66	462	6.7	10	
5	35	1.7	5.7	
45	315	2.2	2.3	
22	154	2.5	3.8	
3	21	2.2	2.9	
523	3,655	1.7	2.3	
44	308	1.4	1.8	
2	14	1.2	1.2	
45	315	1.7	2	
24	168	1.3	1.7	
78	546	1.5	2.3	
216	1,507	2.1	2.2	
222	1,552	1.4	2	
30	210	1.4	1.9	
89	624	3.3	7.2	
92	645	3.1	4.3	
139	971	3.8	6.8	
9	63	1.4	3.9	
169	1,180	1.4	2.1	
11	77	1.9	2.1	
336	2,351	1.9	2.2	
28	196	1.6	2.1	
59	413	1.3	1.8	

2006

%3

.(15)

%6

)

(

)

(

" "

:(15)

( )								
<b>791</b>	<b>5,533</b>	<b>100</b>	<b>6</b>	<b>72</b>	<b>36</b>	<b>49</b>	<b>97</b>	
281	1,967	100	10	74	37	52	94	
510	3,566	100	3	72	35	48	99	

6.3

(16)

4,200

3

2,000

5,533

8.3

(

700,000)

1,000

:(16)

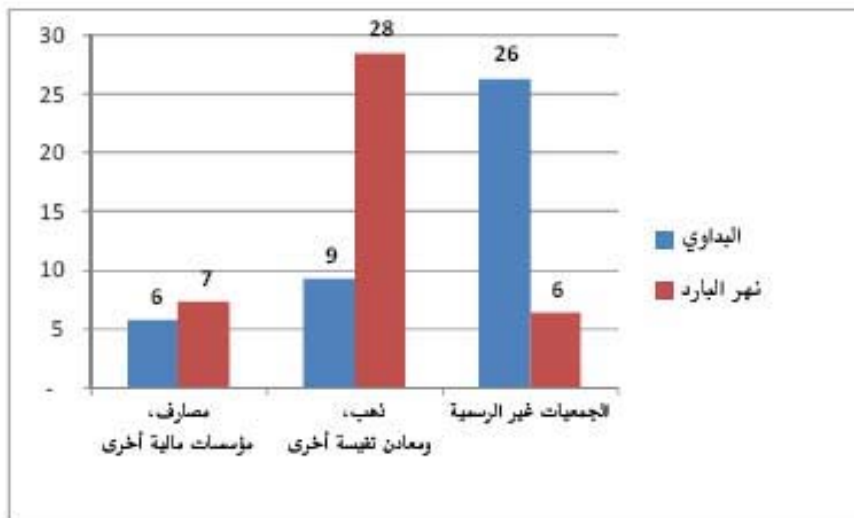
4,850	6,316	4,800	6,307	5,420	6,331	(791 = )
4,800	6,631	4,800	6,892	5,400	6,191	(391 = )
4,800	5,466	4,800	5,808	4,025	4,879	(283 = )
850	1,317	900	1,279	840	1,384	(572 = )
2,400	4,397	2,400	3,041	3,600	5,098	(44 = )

%34

(14)

( )

:(14)



(15)

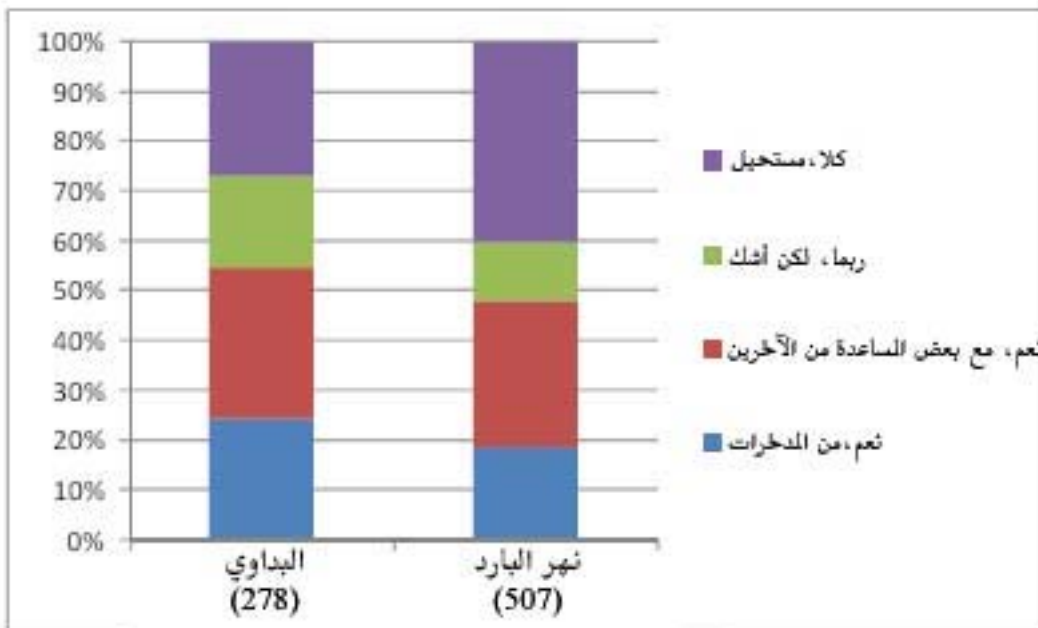
200

300,000

( )

(15):

300,000





.

.

.

.

.

%63

.

:

:

.

.

.

.

:

.

.

.

.

.

Blome Jacobsen, Laurie, (ed.) 2003. *Finding Means, UNRWA's Financial Crisis and Refugee Living Conditions: Socio-economic Situation of Palestinian Refugees in Jordan, Lebanon, Syria, and the West Bank and Gaza Strip*, Fafo-report 427 Volume I, Oslo: Fafo.

Dorai, Mohamed Kamel, 2003. 'Palestinian Emigration from Lebanon to Northern Europe: Refugees, Networks, and Transnational Practices', *Refuge*, Vol. 21. No. 2: 23-31.

Khawaja, Marwan, 2003, 'Population', in Ole Fr. Ugland (ed.) 2003.

Pedersen, Jon, 2003, 'Population Forecast of Palestinian Refugees 2000-2020', in Laurie Blome Jacobsen (ed.) 2003.

Shiblak, Abbas, 2005, 'Reflections on the Palestinian Diaspora in Europe', in Abbas Shibliak (ed.), *The Palestinian Diaspora in Europe: Challenges of Dual Identity and Adaptation*, Refugee and Diaspora Studies, No. 2, Institute of Jerusalem Studies and SHAML Palestinian Refugee & Diaspora Center.

Tiltnes, Åge A., 2005, *Falling Behind: A Brief on the Living Conditions of Palestinian Refugees in Lebanon*, Fafo-report 464, Oslo: Fafo.

Ugland, Ole Fr, (ed.) 2003, *Difficult Past, Uncertain Future: Living Conditions among Palestinian Refugees in Camps and Gatherings of Lebanon*, Fafo-report 409, Oslo: Fafo.

1

International Development and Research Center

.(IDRC)

16

33

2,801

2

8

)

" "

3

.(

4

1982

.See also Pedersen 2003 .(Dorai 2003, Shiblak 2005)

Khawaja 2003: 45.<sup>5</sup>

40

12

1998

6

130,000

" "

.Ugland (ed.) 2003 and Tiltnes 2005 : 1999

7

8

" "

9

( )

10

/

11

( )

.( )

12

15

65

13

---

	"	"	"	"	14
				"	15
					16
%49					17
%30					
	.%1	%1	%19		
			%4		18